

**BROWAY  
SPORTSWEAR**

**PRODUCTS CATALOGUE**



**WHATSAPP : +923093200095**

**BROWAY SPORTSWEAR**

MIANA PURA (WEST) RORAS ROAD, 51310-SIALKOT PAKISTAN



**WWW.BROWAYSPORTSWEAR.COM**

## SOCCER JERSEY DESCRIPTION :

- 100% POLYESTER
- MOISTURE WICKING FABRIC
- MULTIPLE COLLARS OPTIONS
- SHORT SLEEVE, TAILORED FIT



## SOCCER SHORT DESCRIPTION :

- 100% POLYESTER
- MOISTURE WICKING FABRIC
- ELASTIC WAISTBAND WITH DRAW STRING
- 6-7 INCH INSEAM
- OPTIONAL INNER LINING
- OPTIONAL MEDIUM & LONG LENGTH



## SOCCER SOCKS DESCRIPTION :

- 65% POLYAMIDE, 30% COTTON, 5% ELASTANE
- TIGHT FIT



## BASKETBALL JERSEY DESCRIPTION :

- 100% POLYESTER MICRO DENIER INTERLOCK
- MOISTURE WICKING FABRIC, 4.0-4.5 OZ
- 2-FABRIC LAYERS TACKED FOR REVERSIBLE
- MULTIPLE COLLAR STYLE OPTIONS
- LOOSE FIT & FULLY CUSTOMISABLE



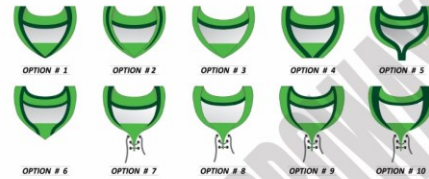
## BASKETBALL SHORT DESCRIPTION :

- 100% POLYESTER MICRO DENIER INTERLOCK
- MOISTURE WICKING FABRIC, 4.0-4.5 OZ
- ELASTIC WAISTBAND WITH DRAWSTRING
- 2-SIDE POCKETS WITH LONGER INSEAM & LOOSE FIT



## ICE-HOCKEY JERSEY DESCRIPTION :

- POLYESTER (200G) | (240G) MESH
- V-NECK | T-NECK | LACED-COLLARS
- OPTIONAL WIDE OR STRAIGHT SLEEVES
- REINFORCED SLEEVES
- UNDERARM MESH VENTILATIONS
- OPTIONAL SHIELD PATCH SEWN ON COLLAR
- OPTIONAL TACKLE-TWILL SEWN
- OPTIONAL FIGHT-STRAP
- OPTIONAL SPLIT OR CLOSED SIDES



## ICE-HOCKEY SOCKS DESCRIPTION :

- 100% POLYESTER MESH
- VELCRO ATTACHMENT
- SIZE : 26, 27, 28, 29, 30 INCHES



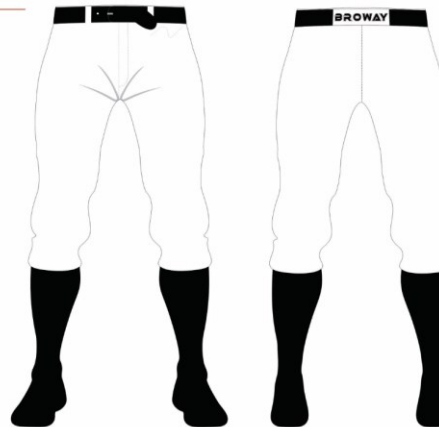
## BASEBALL JERSEY DESCRIPTION :

- 100% POLYESTER MICRO MESH
- MOISTURE WICKING FABRIC, 5.5-6.5 OZ
- OPTIONAL 2-BUTTONS | FULL BUTTONS
- LOOSE FIT & SET-IN SLEEVES
- FULLY CUSTOMISABLE



## BASEBALL PANT DESCRIPTION :

- 100% POLYESTER, 10-14 OZ
- PRO-STYLE BELT LOOPS
- 2-SNAP CLOSURE WITH BRASS ZIPPER FLY
- BACK POCKETS
- OPTIONAL KNEES REINFORCEMENTS



## RUGBY JERSEY DESCRIPTION :

- 100% POLYESTER FABRIC
- MOISTURE WICKING FABRIC
- VARIETY OF COLLAR OPTIONS
- PERFORMANCE FIT
- MULTIPLE SIZES ARE AVAILABLE



## RUGBY SHORT DESCRIPTION :

- 100% POLYESTER FABRIC
- MOISTURE WICKING FABRIC
- ELASTIC WAISTBAND WITH DRAW STRING
- CROTCH PANELS FOR EXTRA MOVEMENT
- SOFT MATERIAL PREVENTS CHAFING





**CYCLING JERSEY DESCRIPTION :**

- 100% POLYESTER
- 180GSM
- TAGLESS LABEL SYSTEM
- SPORT FIT
- SPEEDPRO TECHNICAL FABRIC
- FULL LENGTH ZIPPER
- 3 REAR CARGO POCKETS





**TANK TOPS DESCRIPTION :**

- ALL OVER SUBLIMATION PRINT
- 100% POLYESTER
- 160-GSM MICRO MESH FABRIC
- BREATHABLE AND STRETCHY FABRIC
- SLIM FIT PATTERN
- PERFECT FOR HOT WEATHER
- SOLID BLACK COLLAR AND ARM HEMS
- MOISTURE WICKING FABRIC
- PRESHRINK





# CUSTOM JERSEY

## CUSTOM JERSEY DESCRIPTION :

- 100% POLYESTER, INTERLOCK OR MESH
- 150-200 GSM FABRIC
- MOISTURE WICKING FABRIC
- FULL SUBLIMATED PRINTED
- OPTIONAL FULL OR HALF SLEEVES
- SEPARATE MALE / FEMALE PATTERNS
- COLLAR: V-NECK, O-NECK, POLO, QUARTER ZIP



**DESCRIPTION :**

- 100% POLYESTER FLEECE
- 250-350 GSM FLEECE
- FULLY SUBLIMATED PRINTED
- ADJUSTABLE DRAWCORD AT HOOD
- KANGAROO POCKET ON FRONT
- RIBBED HEM AND CUFFS
- CUSTOM COLOR & SIZE AVAILABLE



## LEGGING DESCRIPTION :

- ALLOVER PRINT, NON-SEE-THROUGH FABRIC
- SOFT, LIKE SECOND SKIN FEEL
- TRIANGLE GUSSET & 4-WAY STRETCHY FABRIC
- MOISTURE WICKING FABRIC
- 2" OR HIGH WAIST
- FLATLOCK SEAMS FOR COMFORT



## SPORTS BRAS DESCRIPTION :

- SCOOPED NECK
- SHOULDER STRAPS
- ELASTICATED BAND ON BOTTOM
- MEDIUM SUPPORT
- COMFORTABLE FOR ALL MOVEMENTS
- PRO-DRY TECHNOLOGY
- LYCRA : 80% POLYESTER + 20% SPANDEX
- OPTIONAL POCKETS
- OPTIONAL PADDED CUPS
- MULTIPLE DESIGN AVAILABLE
- SIZE : 2XS - 2XL



**SHORTS\_QUICKDRY :**

- 100% POLYESTER FABRIC (MAIN)
- 100% POLYESTER FABRIC (LINING)
- LIGHT WEIGHT
- ELASTICATED WAISTBAND
- DRAWSTRING FASTENING
- CONTRAST INNER LINING
- INSEAM LENGTH: 2", 2.50, 3.00"
- MOISTURE WICKING & QUICK DRY LINING FABRIC
- PURPOSE: RUNNING, GYM, TANNIS, WORKOUT
- MULTIPLE COLOURS & STYLES AVAILABLE
- SIZE: 2XS – 2XL



**CASUAL SHORTS :**

- SCOOPED NECK
- SHOULDER STRAPS
- ELASTICATED BAND ON BOTTOM
- MEDIUM SUPPORT
- COMFORTABLE FOR ALL MOVEMENTS
- PRO-DRY TECHNOLOGY
- LYCRA : 80% POLYESTER + 20% SPANDEX
- OPTIONAL POCKETS
- OPTIONAL PADDED CUPS
- MULTIPLE DESIGN AVAILABLE
- SIZE : 2XS - 2XL



## COMPRESSION JERSEY :

- LYCRA, 80% NYLON, 20% SPANDEX
- SUPER SOFT, 6-OZ SILK TOUCH FABRIC
- OPAQUE, MOISTURE WICKING MATERIAL
- STURDY AND DURABLE
- OPTIONAL FULL / HALF SLEEVES
- FLAT-LOCK STITCHED SEAMS
- SUITABLE FOR ATHLETIC & RECREATIONAL USE
- SEPARATE MALE / FEMALE PATTERNS
- SIZE : MULTIPLE SIZES ARE AVAILABLE



## DESCRIPTION :

- SHORT SLEEVE GYM T- SHIRTS
- EMBORIDERED SIK SILK CHEST LOGO
- CURVED HEM, 95%COTTON 5% ELASTANE
- A SOFT-TOUCH FABRIC WITH A CREW NECK



# TRACK SUITS

## DESCRIPTION :

- SOFT AND LIGHTWEIGHT POLYESTER FABRIC
- REGULAR FIT
- ZIP POCKETS TWO SIDES
- 100% POLYESTER MACHINE WASHABLE
- BREATHABLE FABRIC
- PANELLISED STITCHED
- USE FOR CASUAL, GYM, TRAINING, WORKOUT



## DESCRIPTION :

- LONG SLEEVES
- FULL ZIP FASTENING
- 2 HAND POCKETS
- ELASTICATED WAISTBAND





# SWEATSHIRT

## DESCRIPTION :

- 100% PREMIUM ORGANIC COTTON TERRY CLOTH
- SET-IN SLEEVE
- RIBBED HEM, CUFFS AND COLLAR
- MODERN CASUAL FIT
- SIGNATURE TAB LABEL



# HOODIES

## DESCRIPTION :

- 60% COTTON , 40% POLYESTER
- SOFT, COTTON-BLEND FLEECE
- LONG SLEEVES, WITH BANDED CUFFS
- ADJUSTABLE DRAWCORD AT HOOD
- FRONT ZIP WITH ZIPPED SIDE POCKET
- RIBBED HEM
- CUSTOM COLOR & SIZE AVAILABLE



# PUFFER JACKETS

## DESCRIPTION :

- SHELL: 100% POLYESTER, LINING: 100% NYLON
- 2 INTERNAL POCKETS
- FULL ZIP FASTENING
- FILL: 90% DOWN, 10% FEATHERS
- MACHINE WASHABLE



# MEN FASHION JACKETS



## DESCRIPTION :

- BRANDED ZIP CLOSURE
- VERY LIGHTLY PADDED HIGH QUALITY LINING
- INTERNAL LEATHER TRIMMED POCKETS
- SMOOTH LEATHER
- SIDE POCKETS



## DESCRIPTION :

- CLASSIC LEATHER JACKET
- NICE TEXTURED FINISH USING COWHIDE LEATHER
- FEATURING ZIP FRONT FASTENINGS, AND ZIPPED CUFFS
- BREAST POCKETS INSIDE POCKETS AND A BROAD COLLAR



# BOXING APPAREL

## DESCRIPTION :

- SPECIAL CLASSICAL BOXING PATTERN
- 100% POLYESTER SATIN FABRIC
- LOOSE WAIST WITH ADJUSTABLE DRAWING ON THE INSIDE
- TEXT BOXING PRINTED ON THE RIGHT LEG
- EASY TO WASH AND QUICK-DRYING



## DESCRIPTION :

- MEN BOXING ROBES MADE OF HEAVY WEIGHT
- 100% POLYESTER SATIN
- WAIST BELT WITH HOOD
- CAN BE CUSTOMIZED WITH YOUR OWN LABELS, LOGO





## BROWAY SPORTSWEAR

### OFFICE



Husnain Alam  
BROWAY Sportswear  
Manufacturer & Exporter of sportswear Products  
0092 309 3200095  
0092 300 5123595  
Email: [info@BrowaySportswear.com](mailto:info@BrowaySportswear.com)  
Email: [browaysports@gamil.com](mailto:browaysports@gamil.com)  
Web : [www.BrowaySportswear.com](http://www.BrowaySportswear.com)

BROWAY SPORTSWEAR, NEW MIANA PURA – WEST RORAS ROAD, 51310-SIALKOT PAKISTAN